

2025-26 CAREER FAIR OUTCOMES

EMPLOYERS

EMPLOYER SATISFACTION

95% ranked the Career Fair Good/Excellent

97% were Extremely Satisfied/Satisfied with student/alumni preparedness.



EMPLOYERS RECRUITED FOR...

- 63% Internships
- 52% Early Career
- 31% Grad/Masters Level
- 13% PhD/Post Doc
- 18% Experienced

EMPLOYER ENGAGEMENT AT THE FAIR

- 89% Collected Resumes
- 49% Building Talent Pipeline
- 32% Schedule Interviews
- 11% Extend Offers



INDUSTRY REPRESENTATION



- Business, Finance, and Enterprise Services
- Construction, Renewable Energy, and Infrastructure
- Digital & Emerging Technology
- Education, Government, and Civic Engagement.
- Health, Life Sciences & Care Economy

Employer Survey Response Rate Fall 2025: 34% & Spring 2026: 67%

2025-26 CAREER FAIR OUTCOMES

STUDENTS

PARTICIPATION

15%	First Year
10%	Sophomore
16%	Junior
19%	Senior
32%	Masters
1%	Ph.D./Postdoc
7%	Alumni



HOW DID STUDENTS/ALUMNI LEARN ABOUT THE FAIR?



69%	Handshake
58%	Career Center Email /Flyer
16%	Career Center Website
15%	Friend/Peer
10%	Social Media
4%	Instructor

PREPARATION & ENGAGEMENT

92% of students/alumni were somewhat to very prepared for the fair.

96% of students/alumni had somewhat to very valuable interactions with employers. (21% were neutral)



ACADEMIC GOALS & CAREER INTEREST



92% of students/alumni agreed that information presented by employers was helpful for their career and/or academic goals.

88% of companies aligned with student/alumni career interest.

Student & Alumni Survey Response Rate Fall 2025: 4% & Spring 2026 24%

FALL 2025 GRADUATE & PROFESSIONAL SCHOOL FAIR OUTCOMES

SCHOOL SATISFACTION

76% ranked the Fair
Good/Excellent



SCHOOL ENGAGEMENT

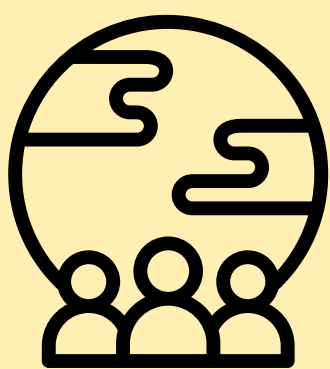
73% had Good/Excellent
interactions with UC San
Diego students.

TABLE VISITS

60% of schools had About or
Exceeded the number of
students they expected to visit
their table.



SCHOOL REPRESENTATION



Business
Arts & Humanities
STEM/Engineering
Law
General Graduate Admissions
Medical

Graduate & Professional School Survey Response Rate Fall 2025: 48%